



Bathing establishment Fact Sheet

Bathhouse name	IMPERIALE
Address	Viale Bernardini, 528
City	Lido di Camaiore (Lu)
Contacts	Telephone +39 3773629205 - info@bagnoimperiale56.it
Website	https://www.bagnoimperiale56.it/

TESTED BY: [Handy Superabile - Social Promotion Association](#) in summer 2023

Please note The following information refers to the verification date shown at the bottom of each card. **The Association** is not responsible for any significant changes made by the property after the visit.

Summary

Bathing establishment Fact Sheet.....	1
Arrival at the facility	2
Private/public parking.....	2
Pathway from the parking lot to the main entrance	2
Reception.....	3
Bar/restaurant	4
Internal Pathways and common services	5
Internal Pathways.....	5
Toilet and shower accessible to guests with reduced mobility.....	5
Changing room.....	7
Beach.....	8
Children's play area.....	8
Swimming pool.....	9
Doctors' Offices/Healthcare Facilities	9


Project carried out with the contribution of the





Arrival at the facility

Private/public parking

Presence of private parking	YES
Type of private car park	gravel
Presence of parking space reserved for people with disabilities	YES
Public parking nearby	YES
Type of public car park	asphalt
	

Pathway from the parking lot to the main entrance

Pathway from the car park to the entrance	flat on a gravel surface that can make it difficult for wheelchair users to move around
There are markers and tactile maps	NO
Usable door/entrance width	more than 90 cm





Reception

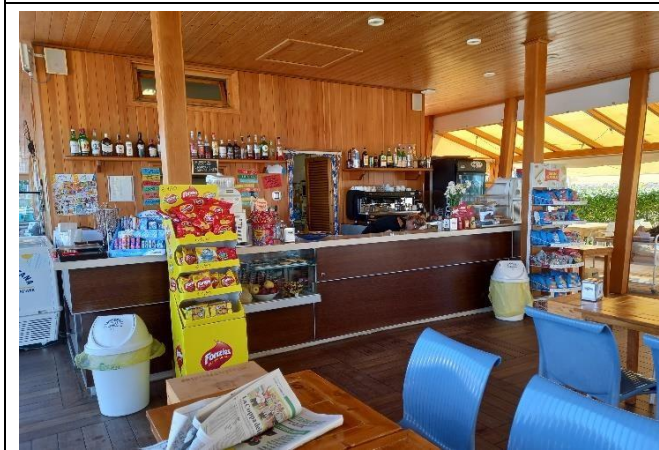
Umbrella booking system	<input type="checkbox"/> Via web <input checked="" type="checkbox"/> By phone <input checked="" type="checkbox"/> On-site
Presence of multilingual staff	YES
Presence of plant plan with key to services available	NO
Presence of visuo-tactile map	NO
Bulletin board/information panels at an average height of 130 cm in a well-lit area and font size at least 14 dpi with a contrast ratio greater than 4.5:1	NO
The staff attended training courses on welcoming people with different disabilities	NO





Bar/restaurant


Type of venue	Bar/restaurant
Access to the premises	It can be reached both on the flat but with a 14.5 cm high step, and with 2 ramps. The first is 78 cm long, > 90 cm wide and 0.2% slope. The second ramp is 300 cm long, > 90 cm wide, 5.33% gradient
Usable door/entrance width	more than 90 cm
Bar counter	more than 100 cm
Types of tables	Tables with 4 legged that can be used for wheelchair combinations and 5 tables with central support that cannot be used for wheelchair combinations
Space underneath the tables from the floor	more than 70 cm
Multilingual menu	NO
Menus with large print fonts	NO
Braille menu	NO
Table service for people with disabilities	YES
Availability of gluten-free food	<input checked="" type="checkbox"/> bread <input checked="" type="checkbox"/> pasta <input checked="" type="checkbox"/> biscuits <input checked="" type="checkbox"/> ice cream <input checked="" type="checkbox"/> Pre-packaged foods





Internal Pathways and common services

Internal Pathways


<p>Indicate whether the pathways connecting the entrance to the beach are flat or with ramps in addition to those already described</p>	<p>Obstacle-free paths</p>
	

Toilet and shower accessible to guests with reduced mobility

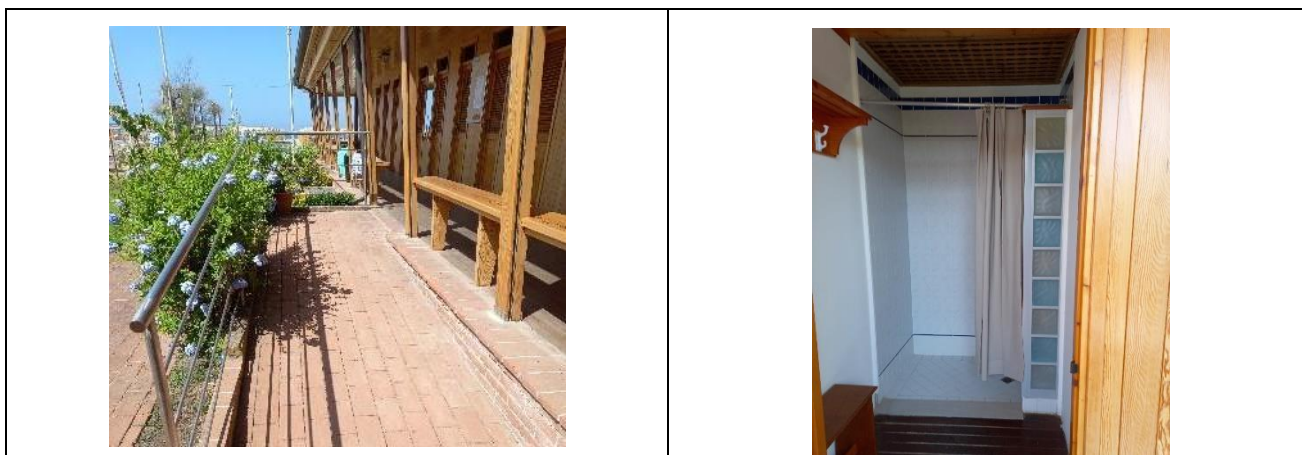
Number of toilets accessible/usable by guests with reduced mobility	1
Access to the premises	Flat
Usable width of the entrance door	more than 90 cm
Toilet height	50 cm
Open front toilet seat	YES
Support handles	on both sides
Flexible hand shower at the side of the toilet	NO
Free space on the sides of the toilet	left 20 cm on the right over 90 cm





	front 50 cm
Electric doorbell/phone	NO
Washbasin with space underneath for wheelchair	60 cm
Height from the ground on the bottom edge of the mirror	Not present
Baby changing table	NO
	
Accessible shower available for guests with reduced mobility	SI separated from the toilet room and shared with a changing room
Access to the shower room if separated from the toilet room	via ramp 375 cm long, width > 90 cm, gradient 9.7 %
Useful width of the door/entrance gate if separated from the toilet room	more than 90 cm
Shower type	open type, bordered by a toilet tent with hot water
Floor-level shower	YES
Shower chair	missing
Grab bar	missing
Presence of shower head or ups and downs	fixed shower head
Electric doorbell/phone	NO







Changing room

Accessible changing room available for guests with reduced mobility	YES and shared with changing room
Access to the premises	via ramp 375 cm long, width > 90 cm, gradient 9.7 %
Usable door/entrance width	more than 90 cm
Size of the dressing room	140 cm wide and 127 cm deep
Presence of a cot	NO
Coat rack height from the ground	over 140 cm





Beach

Type of beach	sand
Access to the beach	Flat
Walkway to reach the umbrellas	YES
Type of walkway	PVC
Walkway width	90 cm
	
Removable Platform between the walkway and the umbrella station to facilitate the passage and parking wheelchair	YES
Amphibious beach chair available for helping people with reduced mobility to enjoy swimming (owned by the establishment or by association)	YES



Children's play area

Children's play area	inaccessible to children with reduced mobility due to sandy bottom
There are games for children with reduced mobility	NO





Swimming pool

The property has a swimming pool	The bathroom has 3 swimming pools, 1 for adults, 1 for children and a whirlpool, which can be reached on the floor. There is a foot wash with a short descent and ascent. The bathtub is an infinity pool. There is a floor-level shower. Staff is available to offer assistance
Access to the swimming pool	Flat
Useful width of the entrance gate	more than 90 cm
Access to the pool	with ladder
Bathing aids for guests with reduced mobility	Fixed Lift
	

Doctors' Offices/Healthcare Facilities

Hospitals near the facility	Ospedale Versilia SS 1, 335, 55049 Camaiole LU Telephone: 0584 6051
Other Healthcare Facilities	ASL Health District n. 12 Viareggio Via Sant'Elme, 30 Tel. 058483873



Project promoted by



Regione Toscana

	<p>Croce Verde Viale Italice, ang. via Risorgimento Tel. 058484013 Free First Aid for white codes Night Medical Guard Tel. 0584 83896 (h. 20-8)</p> <p>Misericordia Via P. I. da Carrara, 32 Tel. 0584752133/0584 752149</p> <p>Medical service "San Camillo" Nursing Home Via P.I. da Carrara, 37 Tel. 0584 7391</p> <p>Dialysis service c/o Croce Verde Viale Italice, ang. via Risorgimento Tel.058484013 affiliated with AUSL</p>
--	--

TESTED BY: **Handy Superabile Social Promotion Association in summer 2023**

Project carried out with the contribution of the



Presidenza del
Consiglio dei Ministri
Ministro per la disabilità